

Radically Simplify™ IT Operations

Tidal™ Enterprise Scheduler

Highlights

- Support for cross-application, cross-platform job dependencies
- Easy-to-use, script-free design
- Robust, seamless integration with major application platforms
- Supports scheduled, ad hoc and straight-through processing
- Flexible scheduling capabilities such as exception based management and role-based security
- Built-in FTP, SFTP and FTPS support
- Built-in database integration
- Event-driven scheduling

Other scheduling solutions on the market frequently require scripting. Tidal Enterprise Scheduler, on the other hand, allows you to define jobs and job streams, dependencies, calendars and triggering events—without requiring the time-consuming and error-prone process of developing and maintaining scripts.

Complete Enterprise Job Automation

Tidal™ Enterprise Scheduler is the easiest to use solution for cross-application and cross-platform enterprise job scheduling, batch business process automation and application integration. Enterprise Scheduler provides the means to define your batch and straight-through business processes, integrate the commercial and custom applications these processes use and determine which tasks to run, and where and when to run them. Automatically.

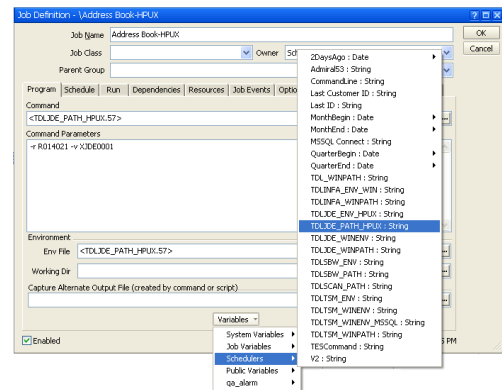
Tidal Enterprise Scheduler can manage hundreds of thousands of tasks a day created by your composite business workflows. It offers a scalable, distributed architecture that works across platforms such as Windows®, UNIX®, Linux®, z/OS®, OS/400®, Tandem®, and OVMS®. In addition, Enterprise Scheduler seamlessly integrates with leading applications such as SAP®, PeopleSoft Enterprise®, Oracle® E-Business Suite and Informatica®. Used in some of the most demanding data centers in the world, Enterprise Scheduler can be implemented quickly and managed easily to rapidly streamline batch processing.

Radically Simple to Use

Tidal Enterprise Scheduler offers an intuitive and easy-to-use graphical user interface with point-and-click operation and standard functions such as tabbed dialog boxes and visual choices for settings and job process definitions. If your staff already uses Microsoft Windows and Outlook, it is well on its way to using Enterprise Scheduler. From a single client console, users can view the processing workload for past, present and future application job executions in real time, allowing disparate systems to be centrally managed—without scripting. Users can create

jobs and job streams as well as calendar and event dependencies at the click of a mouse.

Tidal Enterprise Scheduler can also document the Run Book for managing these critical job streams. Each job definition can contain operational instructions and restart procedures to ensure that operations staff consistently follows your company's best practices.



Cross-Platform, Cross-Application Automation

Sophisticated dependency functions in Tidal Enterprise Scheduler allow users to easily manage processing in a heterogeneous environment. Enterprise Scheduler automatically manages setting up semaphores and synchronization objects to schedule jobs across different types of platforms. Application job

Radically Simplify IT Operations

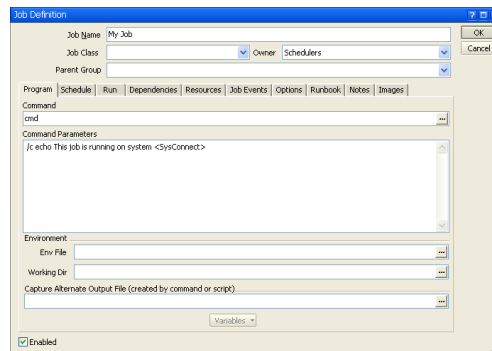
Tidal Enterprise Scheduler

Key Benefits

- Rapidly increases IT efficiency by streamlining and simplifying batch processing across the enterprise
- Enhances system reliability and minimizes expensive downtime by automating batch processes
- Optimizes service and competitive advantage by accelerating mission-critical business application processing
- Improves IT job satisfaction by freeing staff for projects with a direct impact on the business
- Scales easily to handle your largest applications and networks

dependencies can be set to occur on any number of events including job start, job completion, job failure, changes within a specified file, specific occurrences of a job instance, and dependencies from third-party job schedulers, variables and Simple Network Management Protocol (SNMP) events.

Increasingly, businesses are using job scheduling and batch process automation technologies to integrate their internal operations and develop closer links with partners and customers. The technology most commonly used to exchange data or transfer files among applications and partners is the File Transfer Protocol (FTP). Tidal Enterprise Scheduler offers the easiest to use, most powerful script-free solution available to manage both FTP and secure FTP (SFTP and FTPS) dependencies within your job directly from its easy to use user interface.

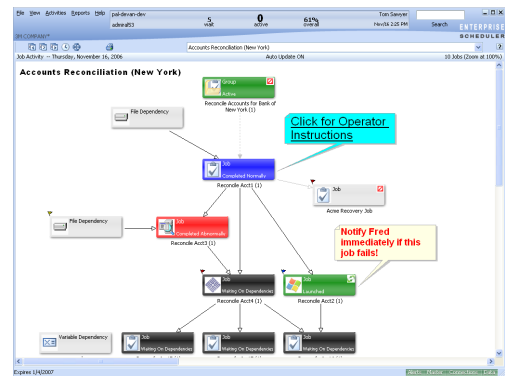


Integration with ERP & BI Applications

Tidal Enterprise Scheduler integrates seamlessly with leading ERP/SCM/CRM applications including SAP, PeopleSoft Enterprise, Oracle E-Business Suite, Informatica and Crystal Enterprise. And with Enterprise Scheduler you need not be concerned about the impact of installing code on your production systems. Enterprise Scheduler's agentless technology integrates with the leading packaged business applications. In addition, it integrates with leading solutions for backup, ETL, reporting engines and various other enterprise applications.

Business Views

Aligning IT with business goals is critical. In order to accomplish this, IT must understand how specific IT tasks relate to an overall business process. Tidal Enterprise Scheduler enables this understanding through its Business Views. These views display the batch tasks comprising a batch business process, their dependencies and status. Using Business Views, your IT staff can define, understand and control not just individual batch tasks, but the overall batch business process.



Scalability

Tidal Enterprise Scheduler installs quickly and scales to meet the needs of organizations of all sizes. Its key components are the Master, Agent and Client. The Master, running on Windows UNIX or Linux manages the overall status of the automation environment and builds information for a real-time view of production processing. Agents execute jobs and provide job status to the Master. Agents are available for Windows, Linux, UNIX, HP MPE OVMS, Tandem and z/OS. With its ability to complete up to hundreds of thousands of jobs daily across hundreds of Agents, Enterprise Scheduler's robust multi-threaded design can handle your most demanding workload.

Radically Simplify IT Operations

Tidal Enterprise Scheduler

Audit Support

Tidal Enterprise Scheduler goes far beyond simply providing logs that indicate which workloads ran and when and where they executed. Enterprise Scheduler provides the tools you need to support IT audit and compliance initiatives—by allowing operations and audit personnel to identify and understand changes made to the production environment, when they were made, who made them and—when necessary—to undo them.

Alert Management

Tidal Enterprise Scheduler's diagnostic tools track problems that appear in the production schedule. Alerts can be sent to the control console in response to event triggers, such as a failed machine. Users can also receive alert notifications via e-mail, telephone or pager and respond directly from those devices. In addition, alerts can be defined and managed without the need to write scripts.



Fault Tolerance and High Availability

Tidal Enterprise Scheduler offers a fault-tolerant high availability architecture for automated system failover and uninterrupted scheduling. And it does this without extensive scripting. It is designed to keep your production schedule running continuously despite machine failures, network issues or even when there is a need for routine maintenance.

Fault-tolerance of the Master is provided through two distinct mechanisms. The first method is industry-standard clustering technology. The second method provides fault tolerance without any requirement for third-party components. Customers can choose the method of their preference. Support for Agent fault tolerance is accomplished using an agent pooling mechanism. If any Agent is unavailable, work is automatically deployed to the next Agent identified in the pool.

Workload Balancing

To maximize system resources, Tidal Enterprise Scheduler allows you to manage production workloads closely through queues with limits and priorities, tracking resource availability and usage as well as balancing workloads across lists of servers based on system load. These tools allow jobs to be processed more efficiently by creating policies for managing the consumption of system resources and distributing job workload across multiple machines. Jobs can be automatically sent to the most available machine or broadcast to multiple systems.

Remote Access through the Web

Tidal Enterprise Scheduler allows organizations to securely monitor and control critical business processes remotely over any Internet connection. The browser function provides complete functionality, not just a limited list of the most common functions. Both Windows and Java-enabled web browsers are fully supported.

TIDAL[®]
SOFTWARE

For more information or to speak with a representative, please contact Tidal Software™ at:

1 (877) 55-TIDAL
sales@tidalsoftware.com

Or visit our web site at:
www.tidalsoftware.com